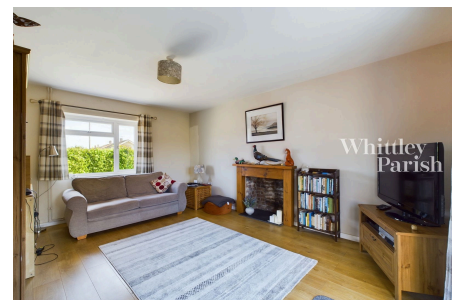


Manor Road, Roydon, Diss

Guide Price £300,000 - £310,000

3 bedrooms 1 bathroom 1 living room



Having been significantly upgraded and enhanced, this spacious three bedroom house boasts a most pleasing elevated position within the sought after village of Roydon and benefits from south westerly facing rear gardens, extensive off-road parking and within walking distance of amenities. No onward chain.

Key Features

- Guide Price £300,000 - £310,000
- Extensive off-road parking
- Enhanced & upgraded
- Utility room
- Council Tax Band B
- South westerly facing gardens
- Large proportioned rooms
- Corner plot position
- Freehold - EPC Rating C
- Gas heating - Mains drainage

